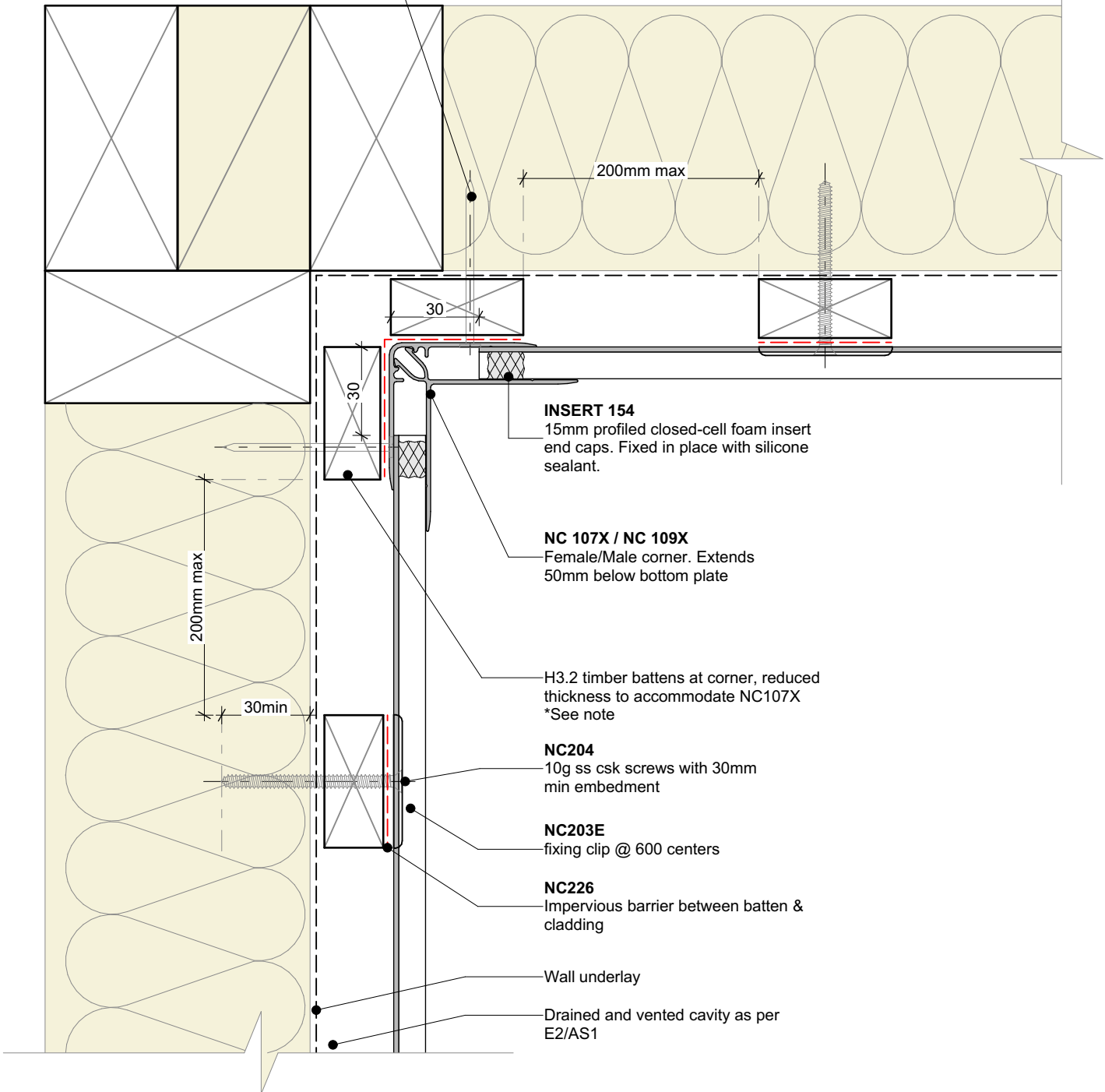


2.8x50mm hot dipped galvanised clout nails @ 600 centers.
(SS for Exposure Zone D)



Cavity batten note:

- 20mm timber battens required for all Nu-Wall horizontal board installations
- Batten to have 15° slope for moisture egress
- Battens to all internal, external corners, jambs, and sills to be sized to 18mm to accommodate flashing build up
- 20 and 18mm single castellated battens are available directly from Nu Wall
- Proprietary Nu-Wall AliBat is available as an alternative when a structural non-combustible batten is required

Interactive assembly instructions available
<http://wksplnz/nw-hoc-intc>



Get WORKINGSPEC from Apple App Store/Google Play



BRANZ Appraised
Appraisal No. 556 [2019]



Nu-Wall cladding horizontal on cavity
Internal 90 deg. corner using NC107X and NC109X

NW-HOC-013.01

Drawn by: Nu-Wall	Date: 3/04/2022
Checked by: RL, GT	Scale: 1:2 @ A4

© 2021 copyright in this document is the property of Nu-Wall Aluminium Cladding Limited. All rights reserved. Nu-Wall is a registered trademark of Aluminium Product Brands NZ Limited