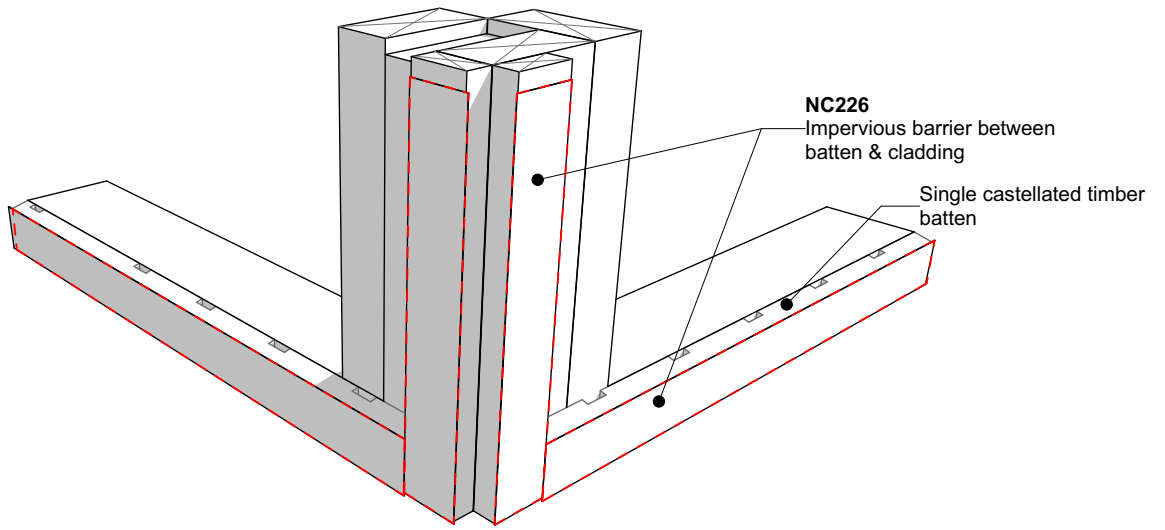


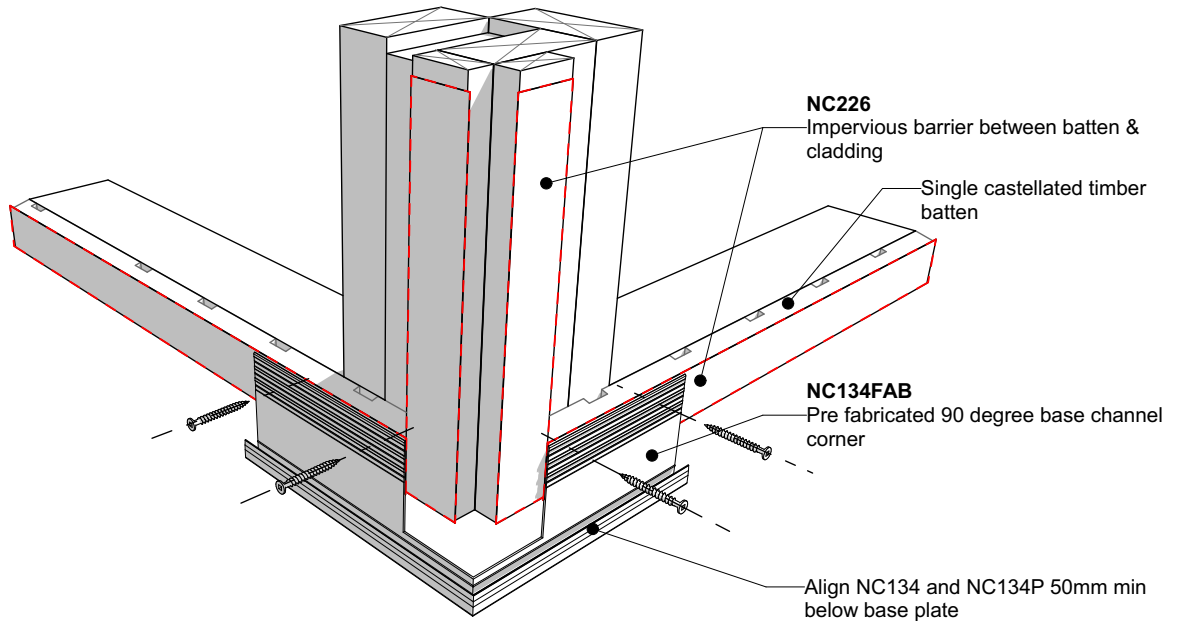
Step 1:



**NC226**  
Impervious barrier between batten & cladding

Single castellated timber batten

Step 2:



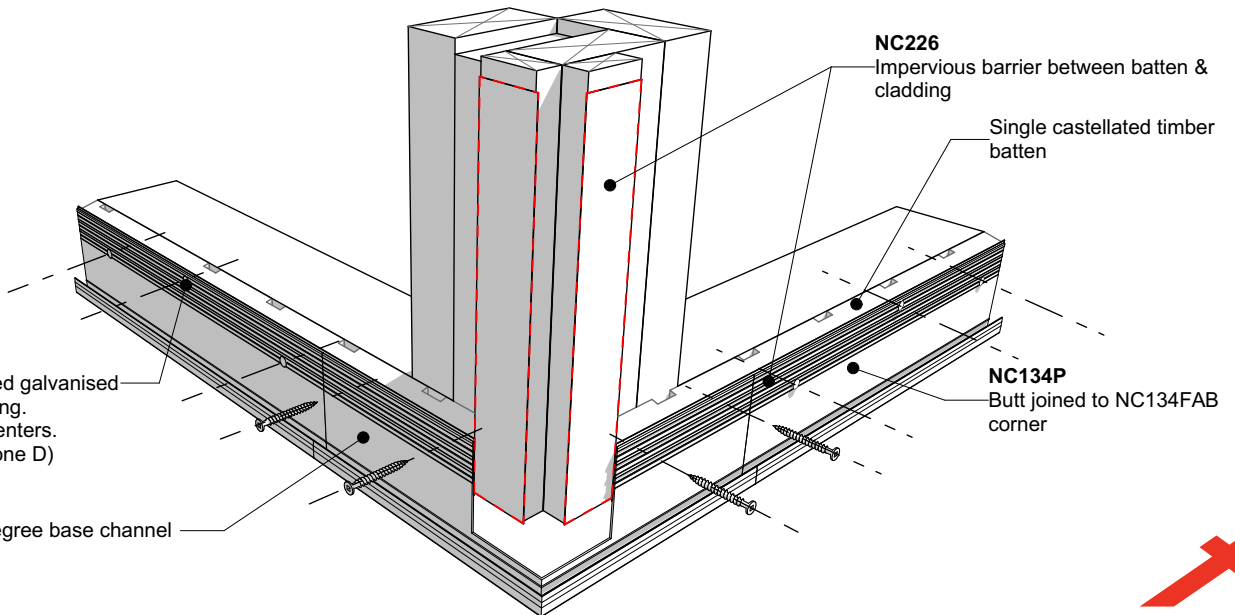
**NC226**  
Impervious barrier between batten & cladding

Single castellated timber batten

**NC134FAB**  
Pre fabricated 90 degree base channel corner

Align NC134 and NC134P 50mm min below base plate

Step 3:



**NC226**  
Impervious barrier between batten & cladding


Single castellated timber batten

2.8x50mm hot dipped galvanised clout nails into framing. Staggered @ 300 centers. (SS for Exposure Zone D)

**NC134FAB**  
Pre fabricated 90 degree base channel corner

**NC134P**  
Butt joined to NC134FAB corner



	Nu-Wall cladding vertical on cavity		NW-VOC-008.02	
	Pre-Fabricated 90 deg base channel corner		Drawn by: Nu-Wall	Date: 28/07/2022
	© 2021 copyright in this document is the property of Nu-Wall Aluminium Cladding Limited. All rights reserved. Nu-Wall is a registered trademark of Aluminium Product Brands NZ Limited		Checked by: RL, GT	Scale: NTS