

**NC204**

10g ss csk screws with 30mm min embedment

**NC203E**

Fixing bracket @ 600mm centers

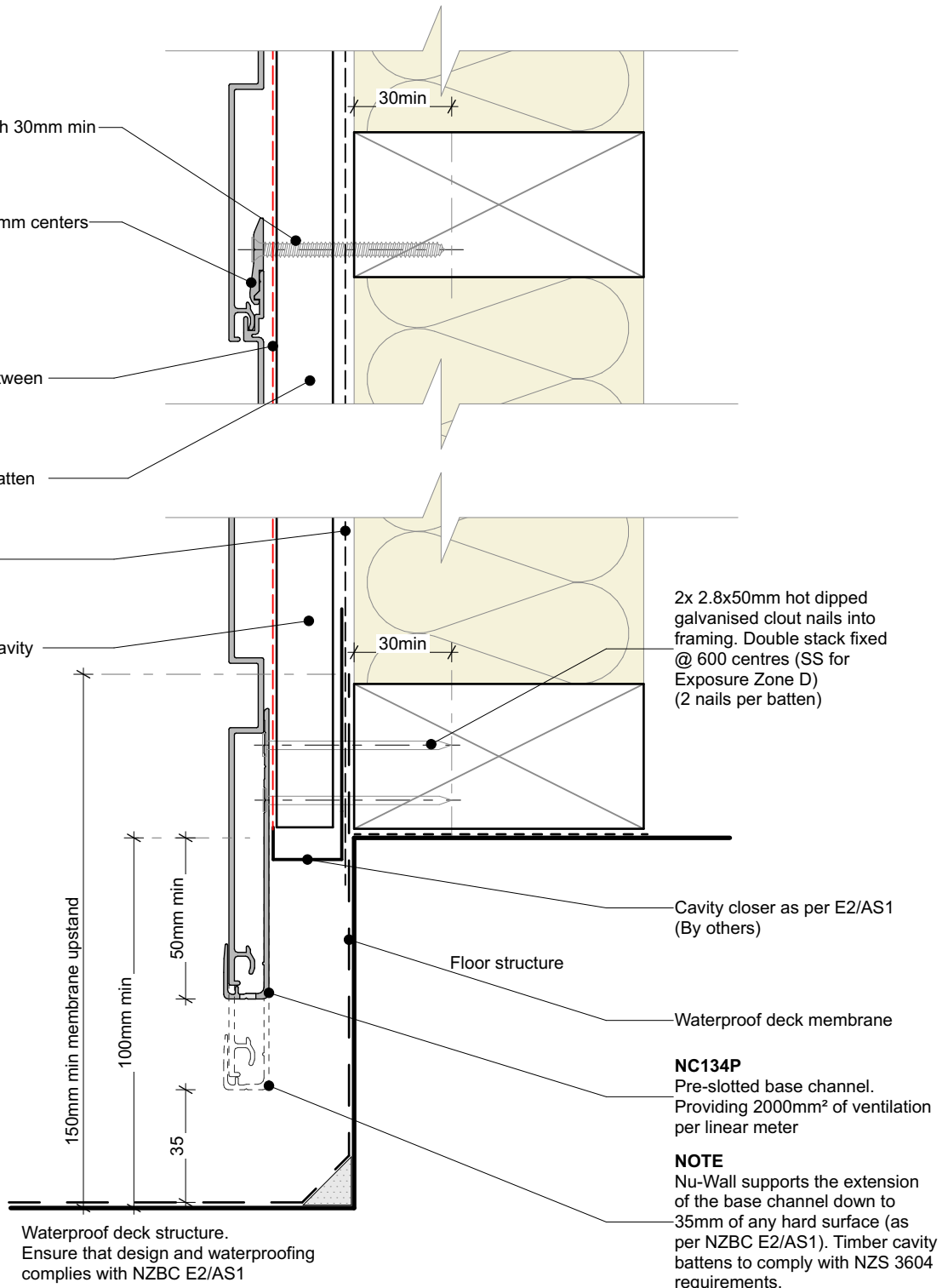
**NC226**

Impervious barrier between batten & cladding

H3.2 vertical timber batten  
\*See note

Wall underlay

Drained and vented cavity as per E2/AS1



2x 2.8x50mm hot dipped galvanised clout nails into framing. Double stack fixed @ 600 centres (SS for Exposure Zone D) (2 nails per batten)

Cavity closer as per E2/AS1 (By others)

Floor structure

Waterproof deck membrane

**NC134P**  
Pre-slotted base channel. Providing 2000mm<sup>2</sup> of ventilation per linear meter

**NOTE**  
Nu-Wall supports the extension of the base channel down to 35mm of any hard surface (as per NZBC E2/AS1). Timber cavity battens to comply with NZS 3604 requirements.

Waterproof deck structure.  
Ensure that design and waterproofing complies with NZBC E2/AS1

**Cavity batten note:**

- 20mm timber battens required for all Nu-Wall horizontal board installations
- Battens to all internal, external corners, jambs, and sills to be sized to 18mm to accommodate flashing build up
- 20 and 18mm single castellated battens are available directly from Nu Wall
- Proprietary Nu-Wall AliBat is available as an alternative when a structural non-combustible batten is required



**nu-wall**  
CLADDING

## Nu-Wall cladding horizontal on cavity Typical base channel over waterproof deck

NW-HOC-007.02

Drawn by: Nu-Wall

Date: 20/9/22

© 2021 copyright in this document is the property of Nu-Wall Aluminium Cladding Limited. All rights reserved. Nu-Wall is a registered trademark of Aluminium Product Brands NZ Limited

Checked by: RL, GT

Scale: 1:2 @ A4