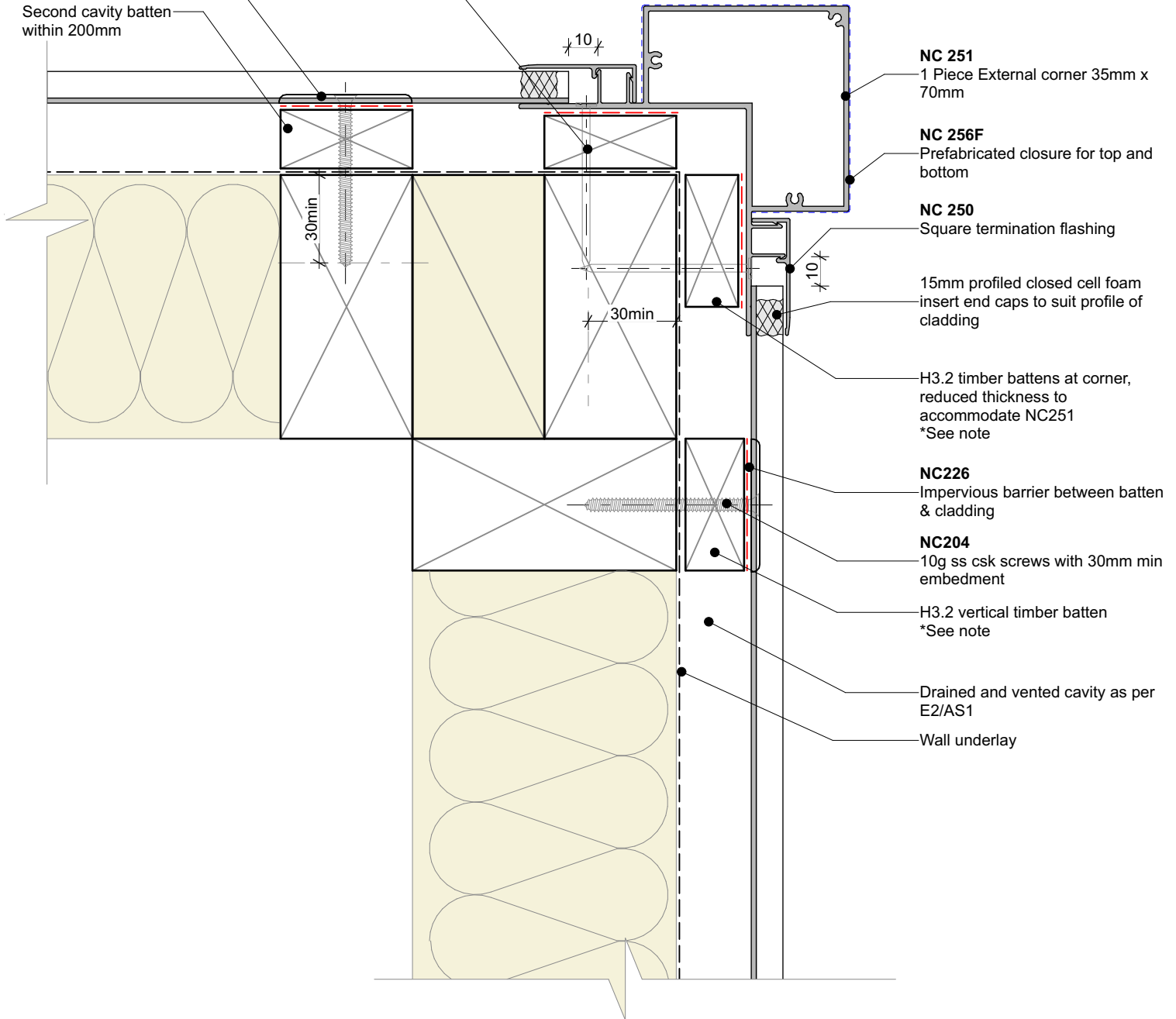


2.8x50mm hot dipped galvanised clout nails @ 600 centers.
(SS for Exposure Zone D)

NC203E
fixing clip @ 600 centers

Second cavity batten within 200mm



NC 251
1 Piece External corner 35mm x 70mm

NC 256F
Prefabricated closure for top and bottom

NC 250
Square termination flashing

15mm profiled closed cell foam insert end caps to suit profile of cladding

H3.2 timber battens at corner, reduced thickness to accommodate NC251
*See note

NC226
Impervious barrier between batten & cladding

NC204
10g ss csk screws with 30mm min embedment

H3.2 vertical timber batten
*See note

Drained and vented cavity as per E2/AS1

Wall underlay

Cavity batten note:

- 20mm timber battens required for all Nu-Wall horizontal board installations
- Batten to have 15° slope for moisture egress
- Battens to all internal, external corners, jambs, and sills to be sized to 18mm to accommodate flashing build up
- 20 and 18mm single castellated battens are available directly from Nu Wall
- Proprietary Nu-Wall AliBat is available as an alternative when a structural non-combustible batten is required



Nu-Wall cladding horizontal on cavity
External 90 deg corner using NC251 box assembly

NW-HOC-012.02

Drawn by: Nu-Wall Date: 20/9/22

Checked by: RL, GT Scale: 1:2 @ A4

© 2021 copyright in this document is the property of Nu-Wall Aluminium Cladding Limited. All rights reserved. Nu-Wall is a registered trademark of Aluminium Product Brands NZ Limited