

Custom folded 1.2mm aluminium flashing powder coated to match cladding and chased in to 15x6mm saw cut and sealed with flexible joint sealant (By others)

BF001
Alibat fixed to concrete masonry @ 600 centers max

NC138 + NC139
Termination flashing base and cap.

NC 204
10g x 16mm csk Tek screw @ 600 centers

15mm profiled closed cell foam insert end caps to suit profile of cladding

NC226
Impervious barrier (MDPE or similar) between batten & cladding

NC204
10g Tek screw in to Alibat @ 600 centers

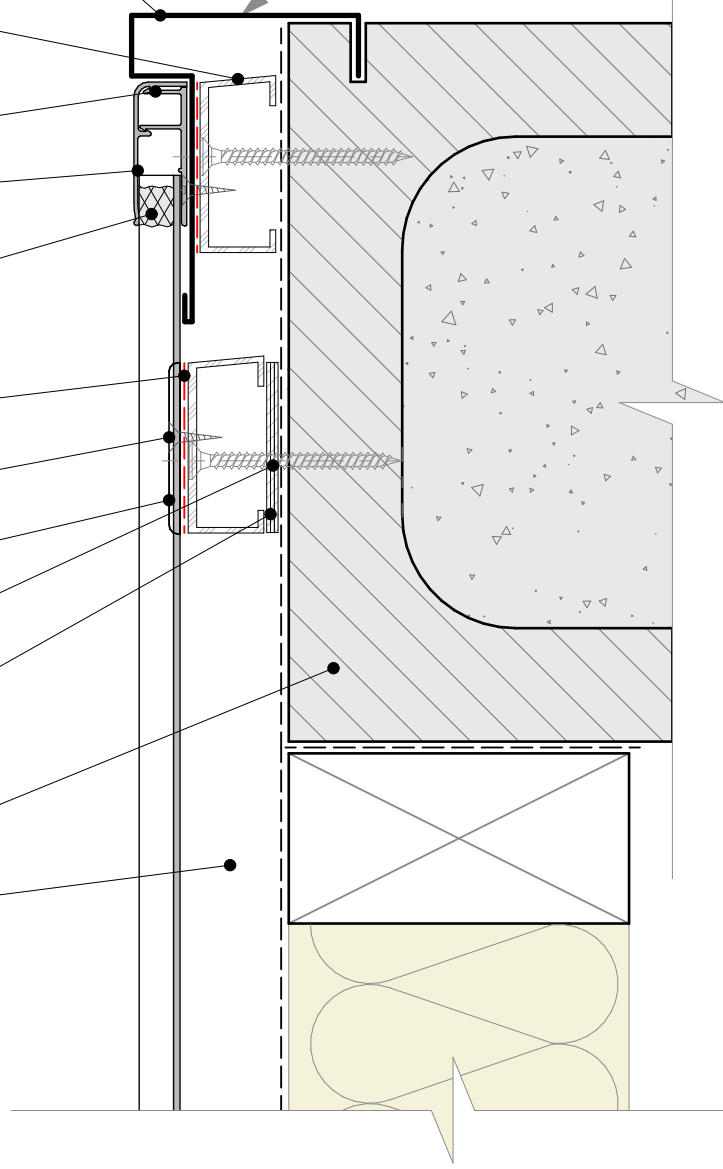
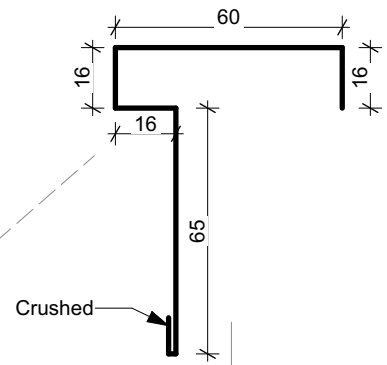
NC203E
fixing clip @ 600 centers

Concrete masonry fasteners

BF SPACER
1mm shims used, if required to level/plumb wall

Concrete masonry block wall

Drained and vented cavity as per E2/AS1



General note:

- Cladding fixings omitted for clarity
- When finishing a wall with a ripped board, the board must be direct fixed with a counter sunk screw @ 600mm centres

Cavity batten note:

- 20mm timber battens required for all Nu-Wall horizontal board installations
- Batten to have 15° slope for moisture egress
- Battens to all internal, external corners, jambs, and sills to be sized to 18mm to accommodate flashing build up
- 20 and 18mm single castellated battens are available directly from Nu Wall
- Proprietary Nu-Wall AliBat is available as an alternative when a structural non-combustible batten is required



Nu-Wall cladding horizontal on cavity
Typical Nu-Wall to concrete masonry external corner

NW-HOC-037.02

Drawn by: Nu-Wall	Date: 20/9/22
Checked by: RL, GT	Scale: 1:2 @ A4

© 2021 copyright in this document is the property of Nu-Wall Aluminium Cladding Limited. All rights reserved. Nu-Wall is a registered trademark of Aluminium Product Brands NZ Limited