

**NC204**

10g ss csk screws with 30mm min embedment

**NC203E**

Fixing bracket @ 600mm centers

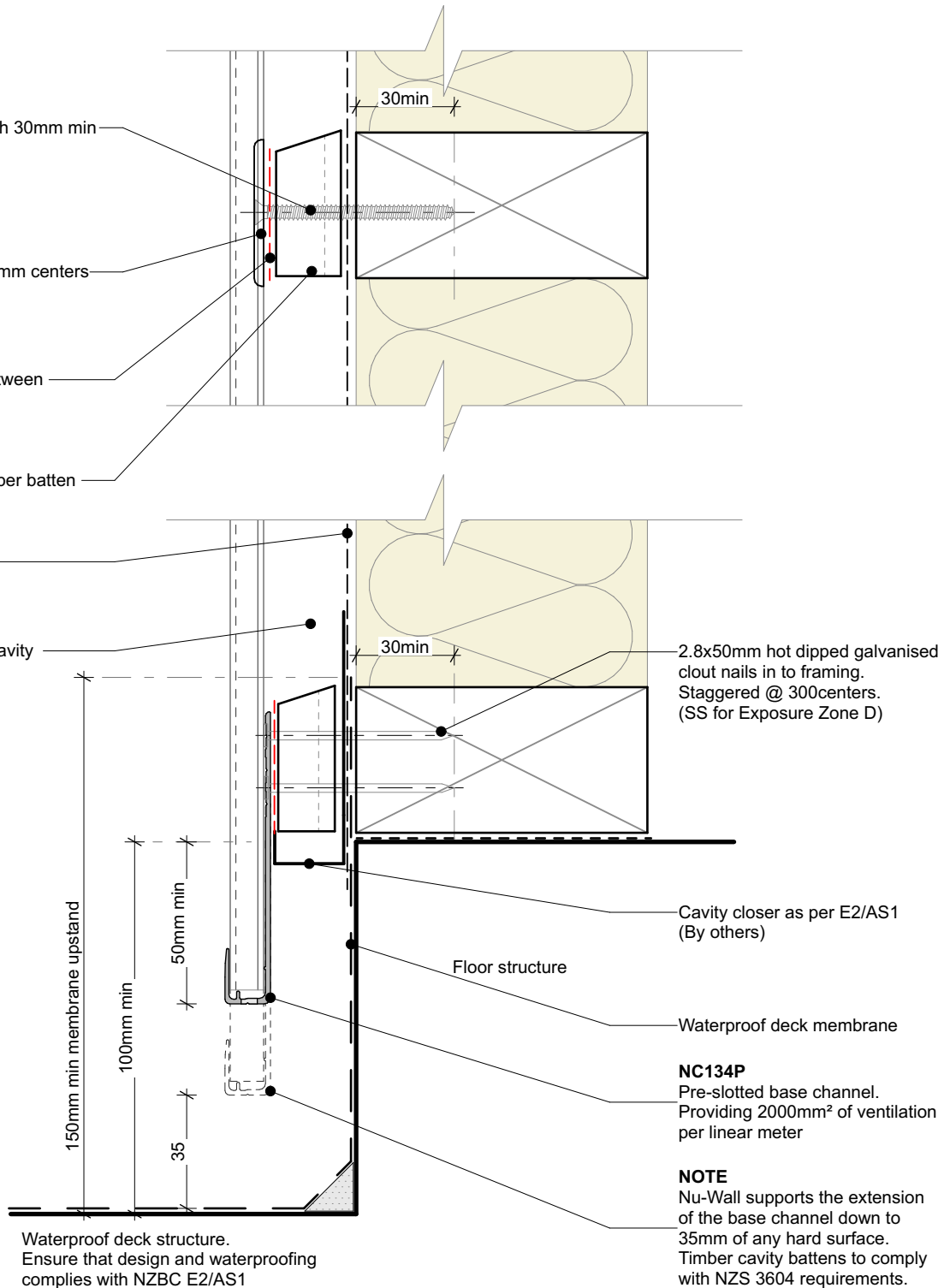
**NC226**

Impervious barrier between batten & cladding

Single castellated timber batten  
\*See note

Wall underlay

Drained and vented cavity as per E2/AS1

**Cavity batten note:**

- 20mm single castellated timber battens required for all Nu-Wall installations.
- Batten to have 15° slope for moisture egress
- 18mm single castellated battens are available from Nu Wall for all vertical applications to wall junctions and jambs
- Proprietary Nu-Wall Alibat is available as an alternative when a structural non-combustable cavity batten is required



## Nu-Wall cladding vertical on cavity Typical base channel over waterproof deck

NW-VOC-007.02

Drawn by: Nu-Wall	Date: 21/9/22
Checked by: RL, GT	Scale: 1:2 @ A4

© 2021 copyright in this document is the property of Nu-Wall Aluminium Cladding Limited. All rights reserved. Nu-Wall is a registered trademark of Aluminium Product Brands NZ Limited