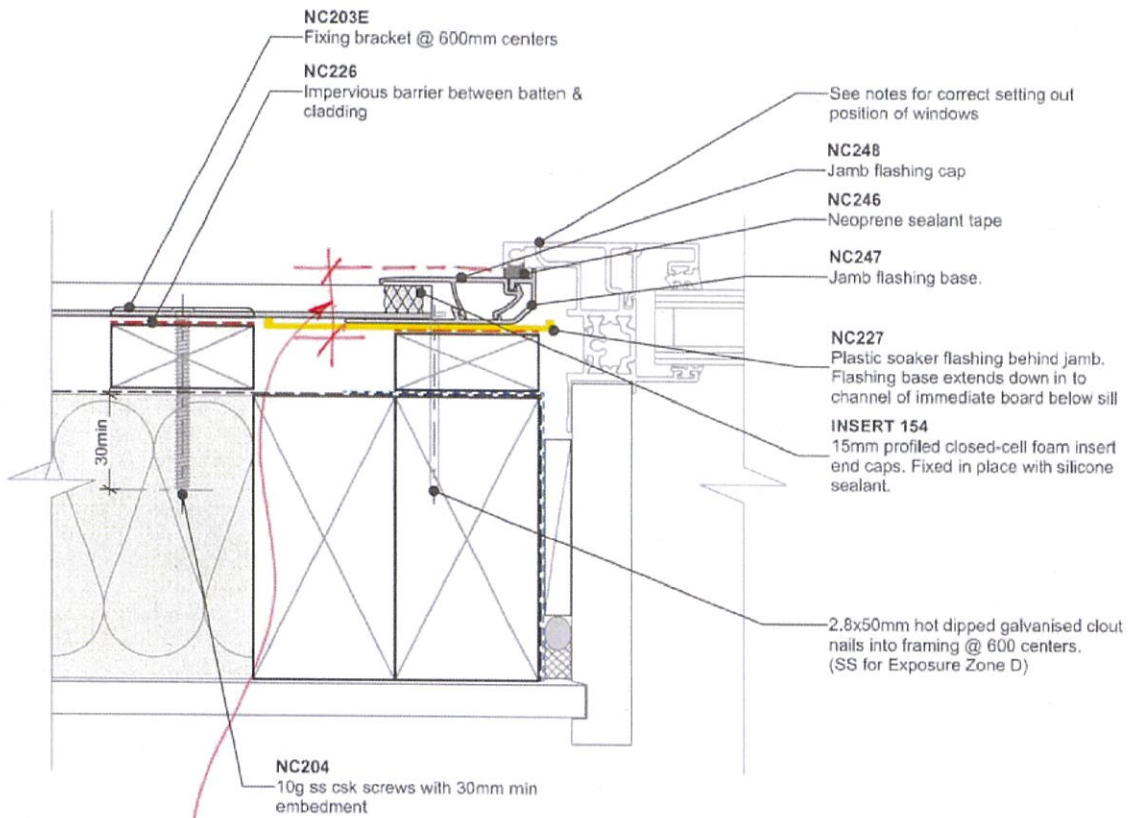


# ON CAVITY



**General note:**  
 • Cladding fixings omitted for clarity

**Window setting out notes:**  
 • 17-18mm for hollow fin windows  
 • 18-20mm for solid fin windows

*\* Dimension taken from the face of the cavity batten*

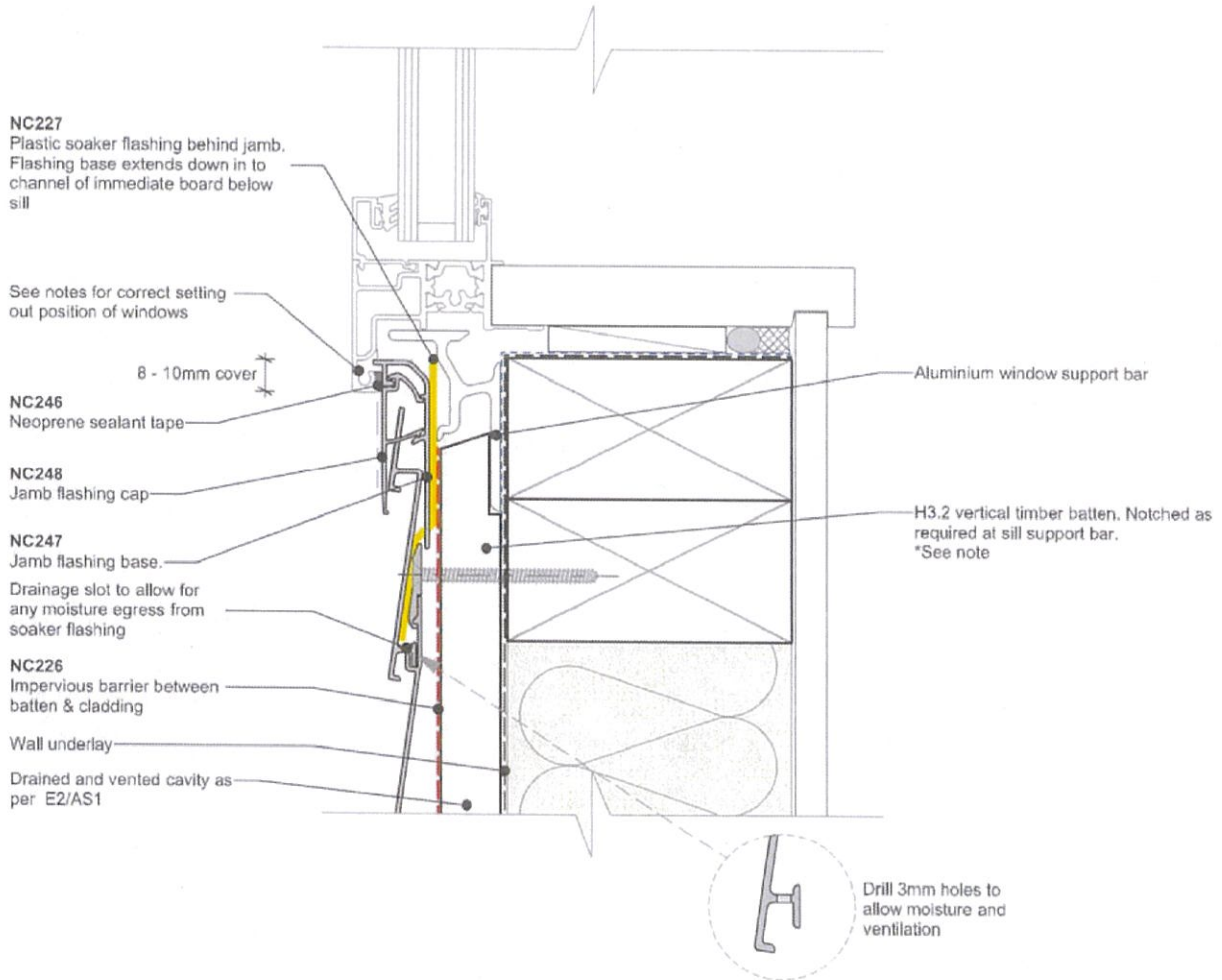


**Cavity batten note:**  
 • 20mm timber battens required for all Nu-Wall horizontal board installations  
 • Batten to have 15° slope for moisture egress  
 • Battens to all internal, external corners, jambs, and sills to be sized to 18mm to accommodate flashing build up  
 • 20 and 18mm single castellated battens are available directly from Nu Wall  
 • Proprietary Nu-Wall AliBat is available as an alternative when a structural non-combustible batten is required



<b>nu-wall</b> CLADDING	<b>Nu-Wall cladding horizontal on cavity</b>	<b>NW-HOC-016.01</b>	
	<b>Typical jamb section - NC247 and NC248 assembly</b>	Drawn by: Nu-Wall	Date: 8/05/2022
© 2021 copyright in this document is the property of Nu-Wall Aluminium Cladding Limited. All rights reserved. Nu-Wall is a registered trademark of Aluminium Product Brands NZ Limited		Checked by: RL, GT	Scale: 1:2 @ A4

# ON CAVITY



**General note:**  
• Cladding fixings omitted for clarity

**Window setting out notes:**

- 17-18mm for hollow fin windows
- 18-20mm for solid fin windows

\* Dimension taken from the face of the cavity batten

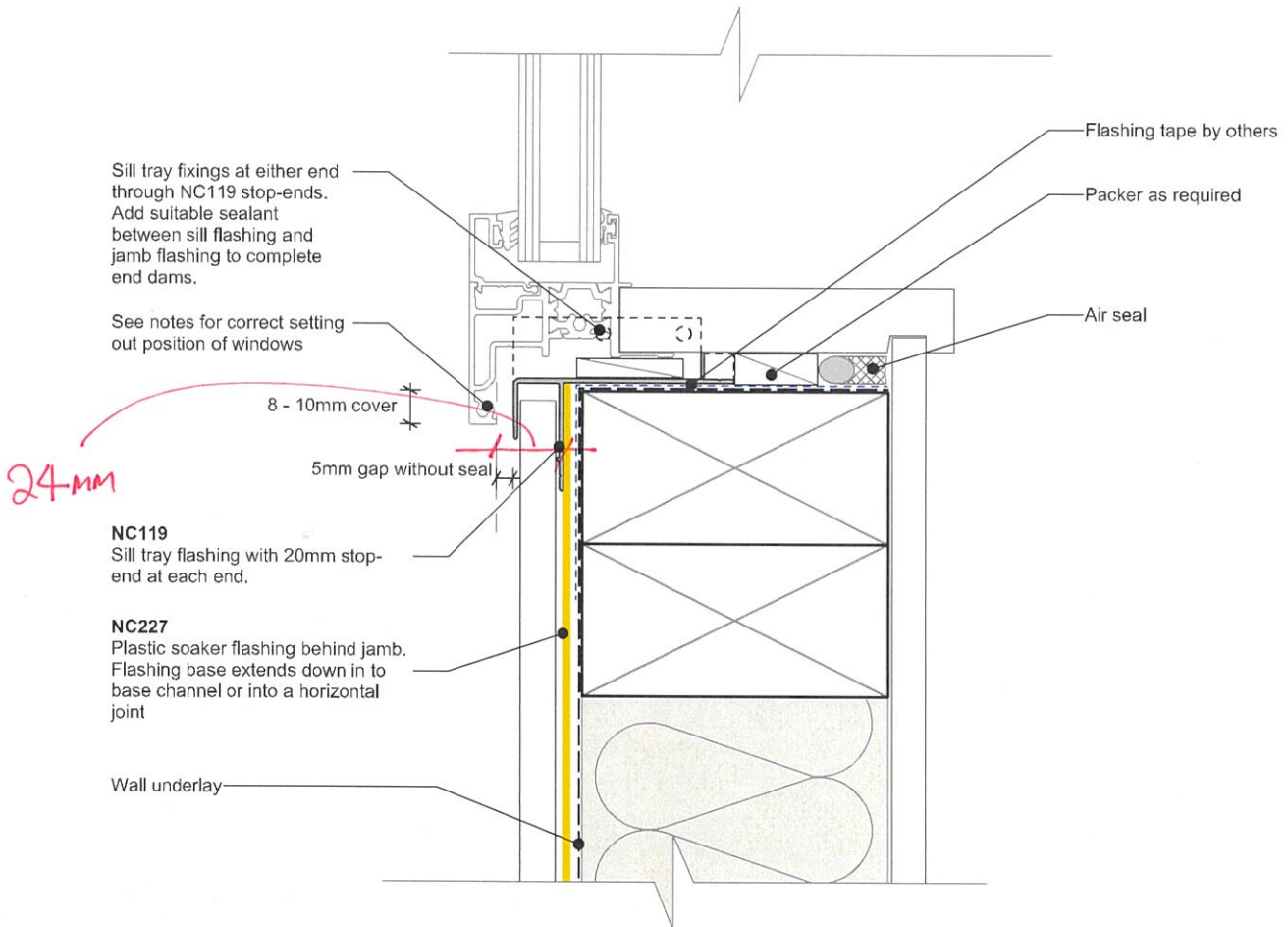
**Cavity batten note:**

- 20mm timber battens required for all Nu-Wall horizontal board installations
- Battens to have 15° slope for moisture egress
- Battens to all internal, external corners, jambs, and sills to be sized to 18mm to accommodate flashing build up
- 20 and 18mm single castellated battens are available directly from Nu Wall
- Proprietary Nu-Wall AliBat is available as an alternative when a structural non-combustible batten is required



	Nu-Wall cladding horizontal on cavity Typical sill section - NC247 and NC248 assembly	NW-HOC-015.01		
	© 2021 copyright in this document is the property of Nu-Wall Aluminium Cladding Limited. All rights reserved. Nu-Wall is a registered trademark of Aluminium Product Brands NZ Limited	Drawn by: Nu-Wall	Date: 8/05/2022	
		Checked by: RL, GT	Scale: 1:2 @ A4	

# DIRECT FIXED



**General note:**

- Cladding fixings omitted for clarity

**Window setting out notes: (from face of air barrier)**

- 24mm from wall underlay to window fin



	Nu-Wall cladding vertical direct fix Typical sill section - NC247 and NC248 assembly	NW-VDF-010.01	
	© 2021 copyright in this document is the property of Nu-Wall Aluminium Cladding Limited. All rights reserved. Nu-Wall is a registered trademark of Aluminium Product Brands NZ Limited	Drawn by: Nu-Wall	Date: 9/05/2022
		Checked by: RL, GT	Scale: 1:2 @ A4