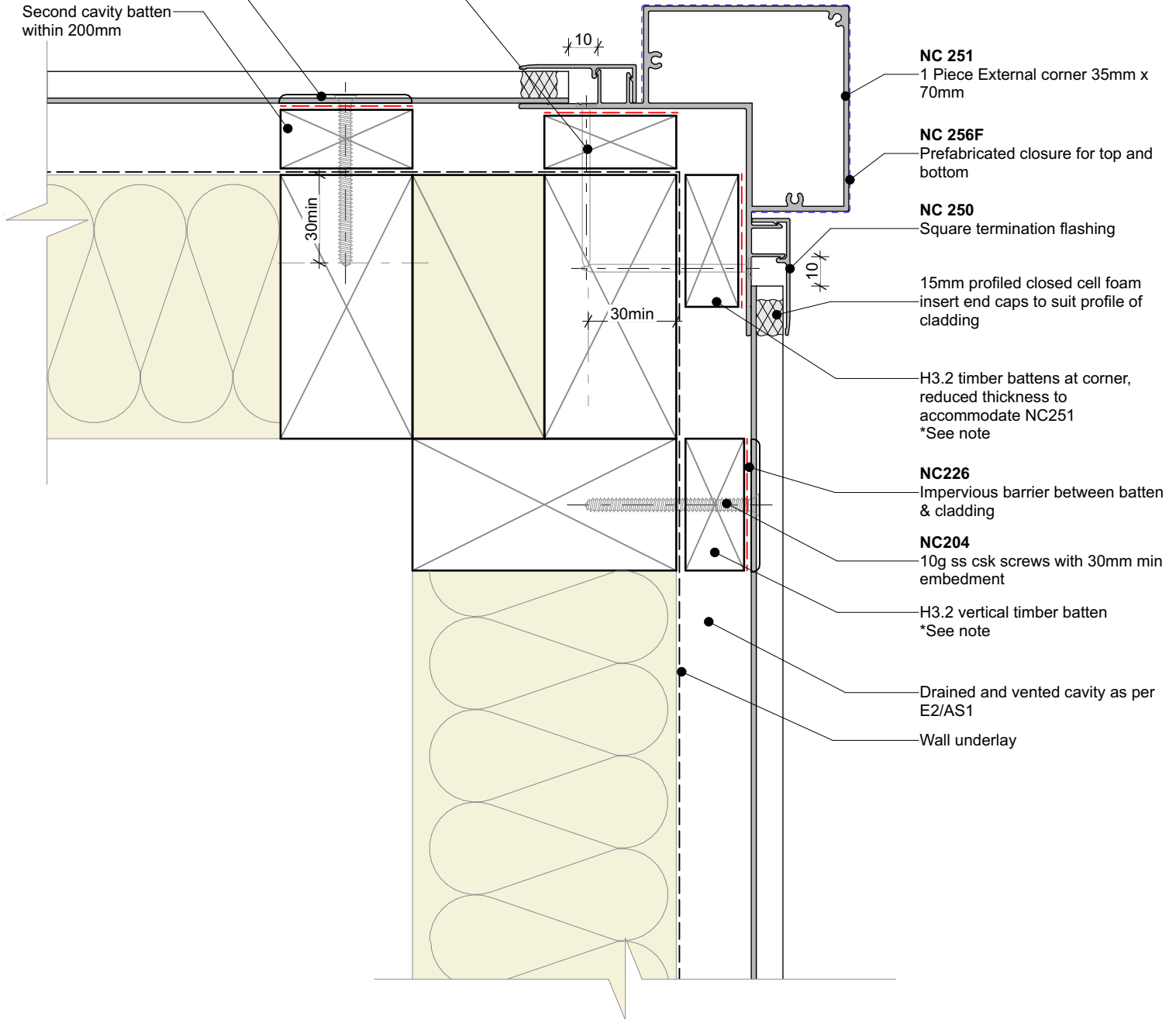


2.8x50mm hot dipped galvanised clout nails @ 600 centers.  
(SS for Exposure Zone D)

**NC203E**  
fixing clip @ 600 centers

Second cavity batten within 200mm



**NC 251**  
1 Piece External corner 35mm x 70mm

**NC 256F**  
Prefabricated closure for top and bottom

**NC 250**  
Square termination flashing

15mm profiled closed cell foam insert end caps to suit profile of cladding

H3.2 timber battens at corner, reduced thickness to accommodate NC251  
\*See note

**NC226**  
Impervious barrier between batten & cladding

**NC204**  
10g ss csk screws with 30mm min embedment

H3.2 vertical timber batten  
\*See note

Drained and vented cavity as per E2/AS1

Wall underlay

**Cavity batten note:**

- 20mm timber battens required for all Nu-Wall horizontal board installations
- Batten to have 15° slope for moisture egress
- Battens to all internal, external corners, jambs, and sills to be sized to 18mm to accommodate flashing build up
- 20 and 18mm single castellated battens are available directly from Nu Wall
- Proprietary Nu-Wall AliBat is available as an alternative when a structural non-combustible batten is required



Nu-Wall cladding horizontal on cavity  
External 90 deg corner using NC251 box assembly

NW-HOC-012.02

Drawn by: Nu-Wall Date: 19/9/2024

Checked by: RL, GT Scale: 1:2 @ A4

© 2021 copyright in this document is the property of Nu-Wall Aluminium Cladding Limited. All rights reserved. Nu-Wall is a registered trademark of Aluminium Product Brands NZ Limited