

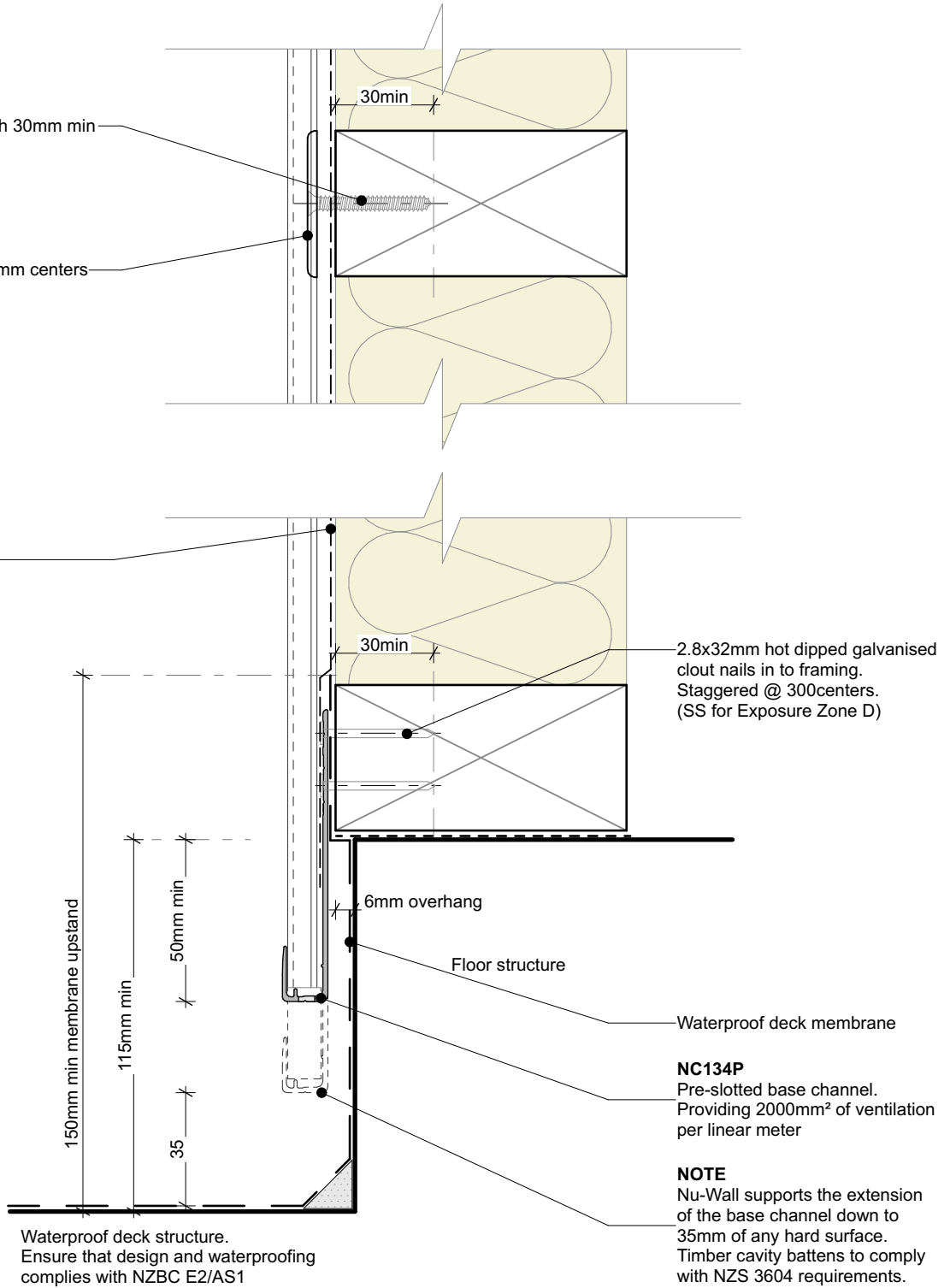
NC204

10g ss csk screws with 30mm min embedment

NC203E

Fixing bracket @ 600mm centers

Wall underlay



Waterproof deck structure.
Ensure that design and waterproofing
complies with NZBC E2/AS1

NC134P
Pre-slotted base channel.
Providing 2000mm² of ventilation
per linear meter

NOTE
Nu-Wall supports the extension
of the base channel down to
35mm of any hard surface.
Timber cavity battens to comply
with NZS 3604 requirements.

Note:

- Standard fixing specification. May vary depending on wind load



Nu-Wall cladding vertical direct fix
Typical base channel over waterproof deck

NW-VDF-004.02

| | |
|--------------------|-----------------|
| Drawn by: Nu-Wall | Date: 19/9/2024 |
| Checked by: RL, GT | Scale: 1:2 @ A4 |

© 2021 copyright in this document is the property of Nu-Wall Aluminium Cladding Limited. All rights reserved. Nu-Wall is a registered trademark of Aluminium Product Brands NZ Limited