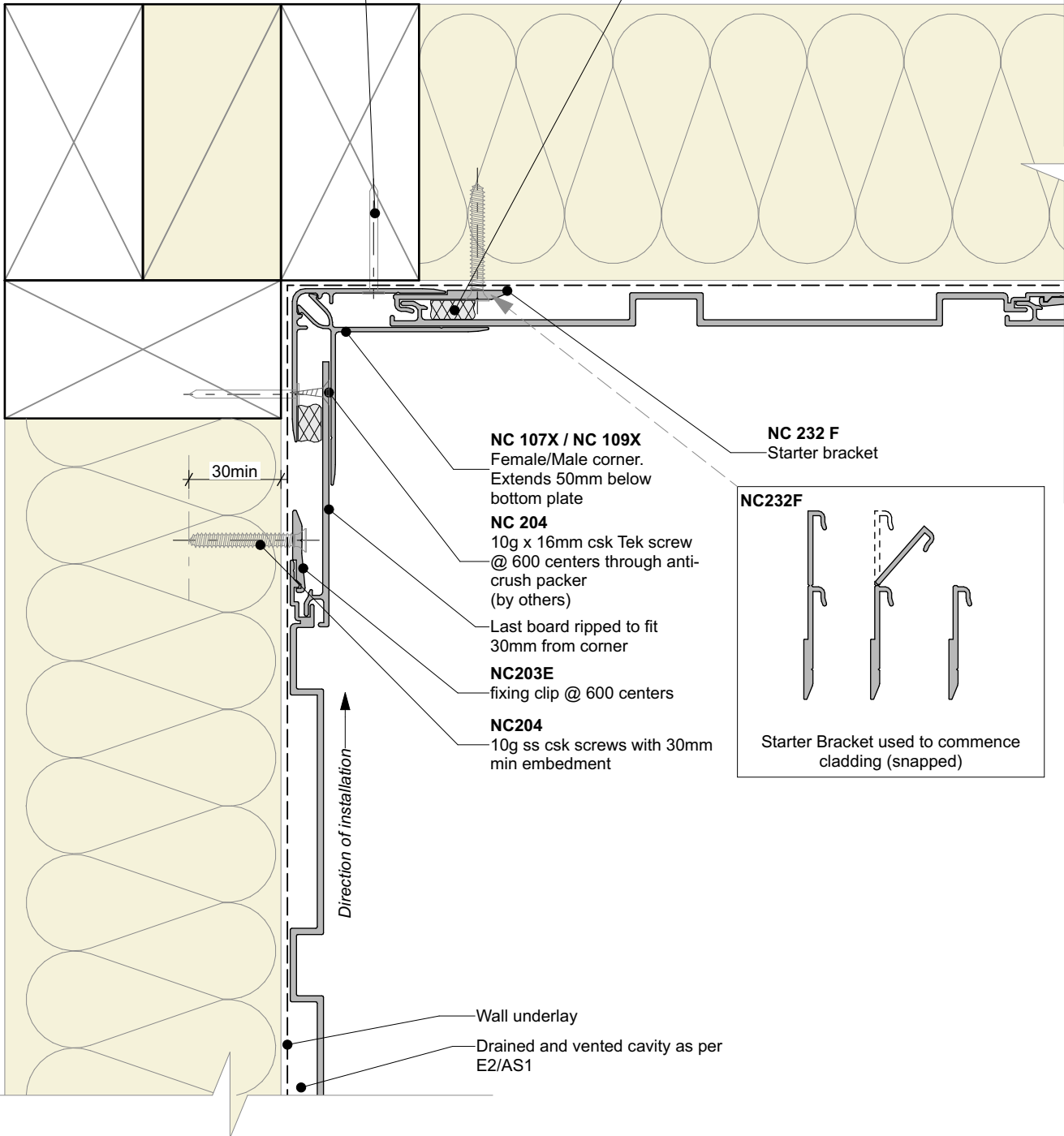


2.8x32mm hot dipped galvanised clout nails @ 600 centers.
(SS for Exposure Zone D)

NC 220
15x15mm closed-cell foam insert



NC 107X / NC 109X
Female/Male corner.
Extends 50mm below
bottom plate

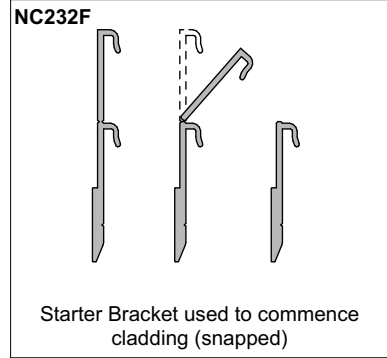
NC 204
10g x 16mm csk Tek screw
@ 600 centers through anti-
crush packer
(by others)

Last board ripped to fit
30mm from corner

NC 203E
fixing clip @ 600 centers

NC 204
10g ss csk screws with 30mm
min embedment

NC 232 F
Starter bracket



Wall underlay

Drained and vented cavity as per
E2/AS1



nu-wall
CLADDING

Nu-Wall cladding vertical direct fix
Internal 90 deg corner using NC107X and NC109X

NW-VDF-008.02

Drawn by: Nu-Wall Date: 19/9/2024

Checked by: RL, GT Scale: 1:2 @ A4

© 2021 copyright in this document is the property of Nu-Wall Aluminium Cladding Limited. All rights reserved. Nu-Wall is a registered trademark of Aluminium Product Brands NZ Limited