

2.8x32mm hot dipped galvanised clout nails @ 600 centers.  
(SS for Exposure Zone D)

**NC203E**  
fixing clip @ 600 centers

Last board ripped to fit

**NC 204**  
10g x 16mm csk Tek screw @ 600 centers through anti-crush packer (by others)

**NC 107X / NC 109X**  
Female/Male corner. Extends 50mm below bottom plate

**NC 220**  
15x15mm closed-cell foam insert

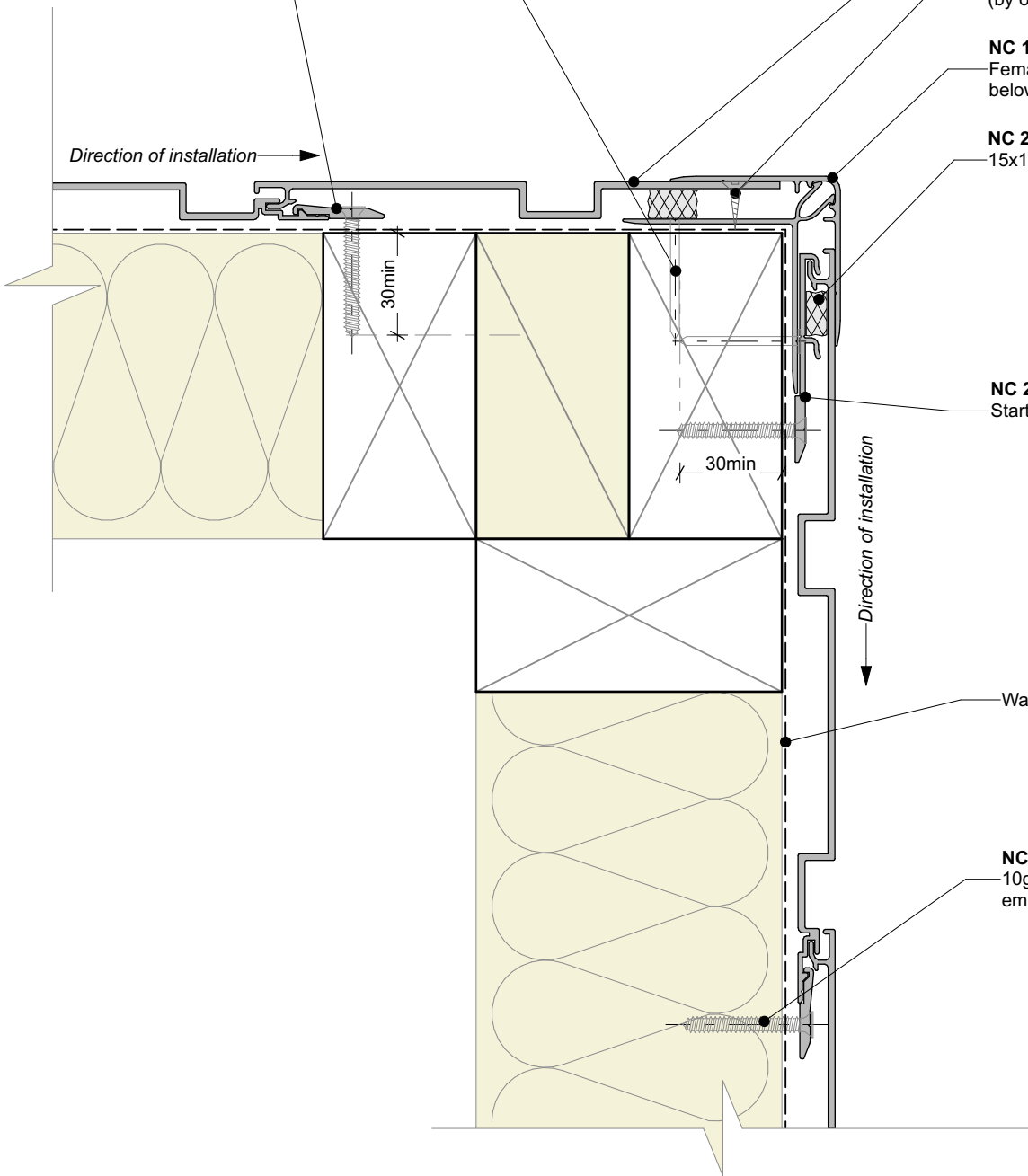
Direction of installation →

**NC 232 F**  
Starter bracket

Direction of installation ↓

Wall underlay

**NC204**  
10g ss csk screws with 30mm min embedment



Nu-Wall cladding vertical direct fix  
Typical external 90 deg corner

NW-VDF-007.02

© 2021 copyright in this document is the property of Nu-Wall Aluminium Cladding Limited. All rights reserved. Nu-Wall is a registered trademark of Aluminium Product Brands NZ Limited

Drawn by: Nu-Wall Date: 19/9/2024

Checked by: RL, GT Scale: 1:2 @ A4