

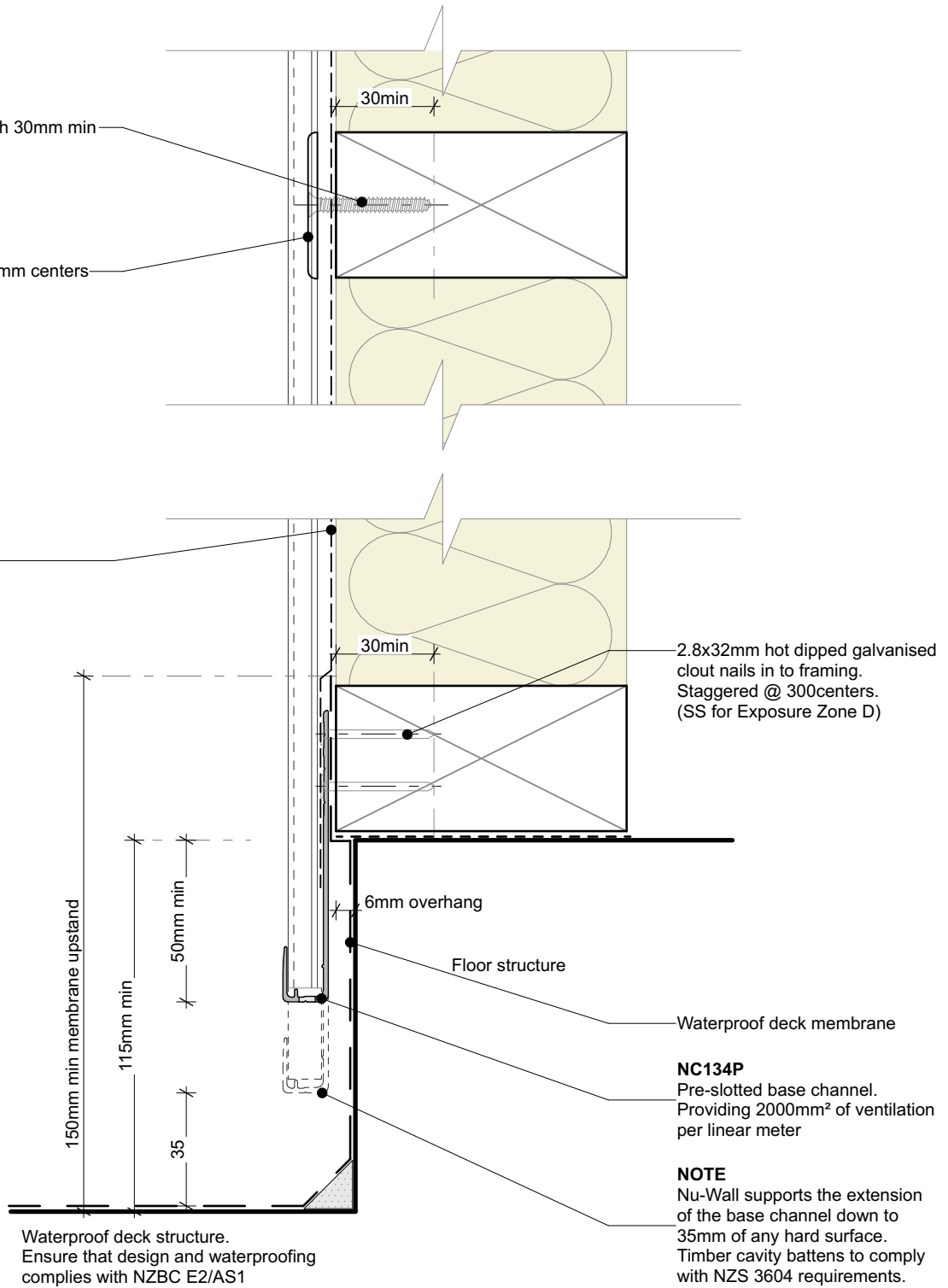
NC204

10g ss csk screws with 30mm min
embedment

NC203E

Fixing bracket @ 600mm centers

Wall underlay

**Note:**

- Standard fixing specification. May vary depending on wind load



nu-wall
CLADDING

Nu-Wall cladding vertical direct fix

Typical base channel over waterproof deck

© 2021 copyright in this document is the property of Nu-Wall Aluminium Cladding Limited. All rights reserved. Nu-Wall is a registered trademark of Aluminium Product Brands NZ Limited

NW-VDF-004.02

Drawn by: Nu-Wall

Date: 25/02/2025

Checked by: RL, GT

Scale: 1:2 @ A4