

Flashing, Re-imagined.

Introducing a smarter, more adaptable flashing fit.

We believe small changes can make a big difference.

Guided by your feedback, we've refined our approach to top-of-wall and termination flashings. The new NC247T / NC248 assembly builds on the reliability of the NC138/139 system — with more flexibility, a simpler install, and a sharper finish.

Why the change?

The previous flashing system required perpendicular access to engage the cap — making installs under soffits or tight eaves challenging.

The new NC247T base flashing changes that. It allows cladding to be installed after fascia or overhangs are in place — giving builders more flexibility on site and fewer sequencing headaches.

We've also introduced a smarter cap: the NC248 rotates cleanly into place and can be easily removed using Nu-Wall's plastic pry bars, making adjustments simpler and stress-free.

Refined to work
better for everyone.



FASTER, EASIER INSTALLS

Spend less time lining things up, and more time moving forward.



SMARTER ON-SITE ADJUSTMENTS

Practical, flexible, and cost-effective where it counts.



A SHARPER FINISH

Cleaner lines at walls and junctions, with a neater overall result.



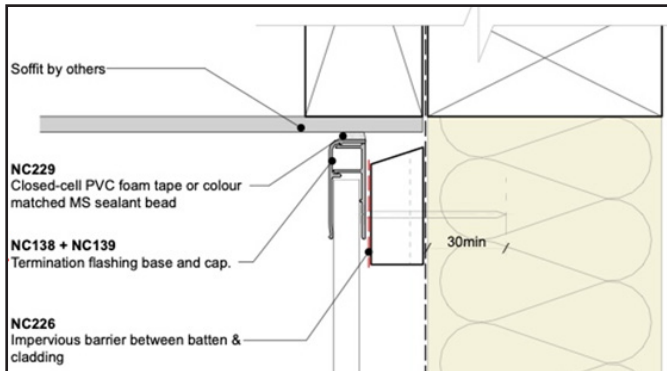
EASY TO FINE-TUNE

Need to make a change? The system's designed to shift with you.

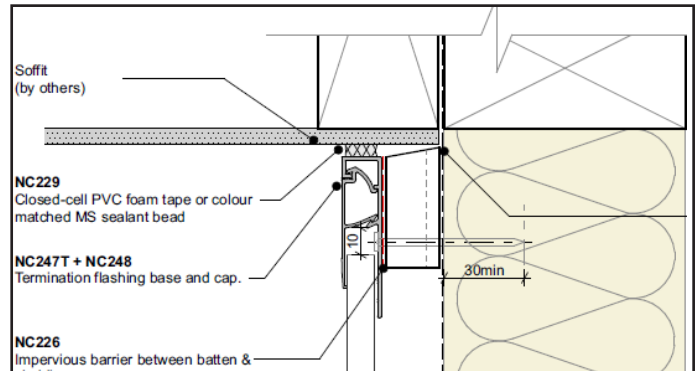
Detailing the change.

nu-wall
CLADDING

EXISTING



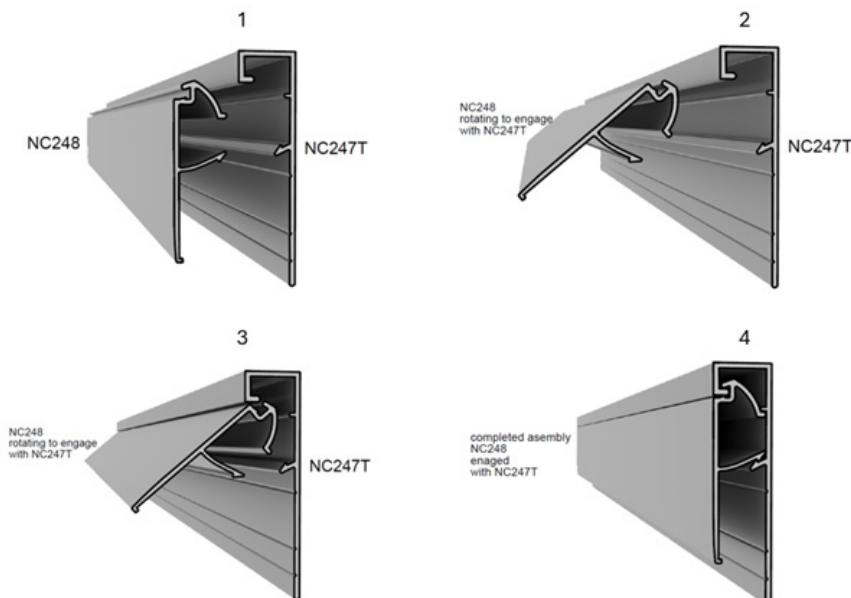
NEW



New details are now available under Technical Resources on our website nuwall.co.nz

Installation made easy.

The rotate-in mechanism allows for a seamless and efficient installation process. See the installation sequence below for a step-by-step guide.



UPGRADE YOUR PROJECT TODAY

The NC247T / NC248 termination flashing is ready to go. Contact us now for more information or to place an order info@nuwall.co.nz.

Features designed for flexibility.

- ☒ **A solution you can trust**
Forms part of our BRANZ appraised systems.
- ☒ **Innovative Rotate-In Engagement**
NC248 cover flashing locks into place smoothly and securely.
- ☒ **Ready to Ship**
Available now in 6m lengths.
- ☒ **Premium Finish Options**
NC247T back flashing comes in a powder-coated or anodised finish to match Nu-Wall boards (legacy NC247 jamb flashing remains mill-finished).
- ☒ **Locally Manufactured** in New Zealand – A local supply chain using recycled aluminium for a sustainable build.