

**BF001**

Alibat fixed to framing  
@ 600 centers max

**NC204**

10g ss csk screws @ 600 centers  
with min 30mm embedment

**NC204**

10gx16mm T410 SS csk screw @  
600 centers

**NC203A**

Fixing bracket @ 600mm centers

Wall underlay

Air and moisture path

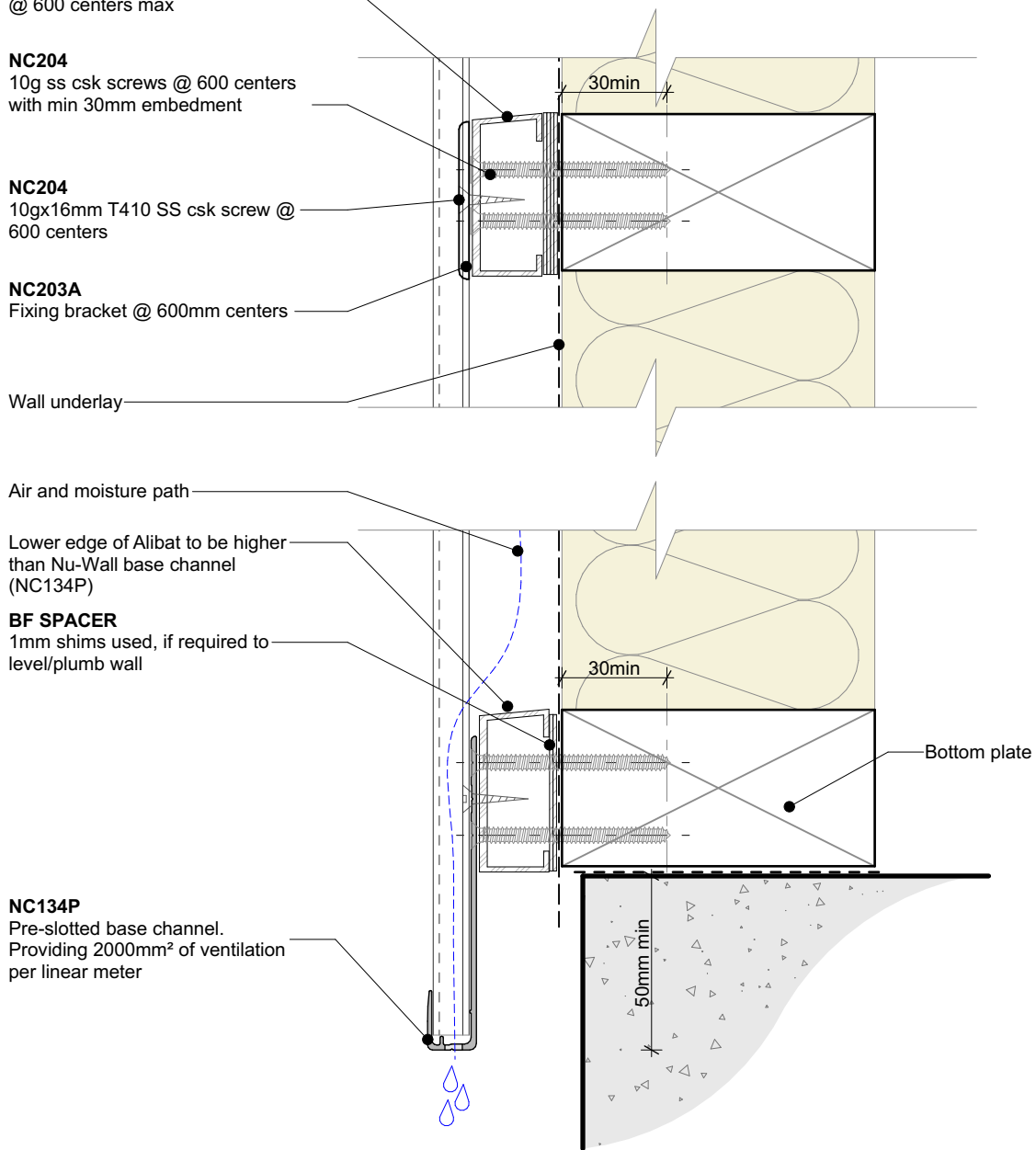
Lower edge of Alibat to be higher  
than Nu-Wall base channel  
(NC134P)

**BF SPACER**

1mm shims used, if required to  
level/plumb wall

**NC134P**

Pre-slotted base channel.  
Providing 2000mm<sup>2</sup> of ventilation  
per linear meter



**nu-wall**  
CLADDING

## Nu-Wall cladding vertical on cavity

### Typical installation - Alibat to timber frame

© 2021 copyright in this document is the property of Nu-Wall Aluminium Cladding Limited. All rights reserved. Nu-Wall is a registered trademark of Aluminium Product Brands NZ Limited

**NW-VOC-004.02**

Drawn by: Nu-Wall

Date: 02/07/2025

Checked by: RL, GT

Scale: 1:2 @ A4