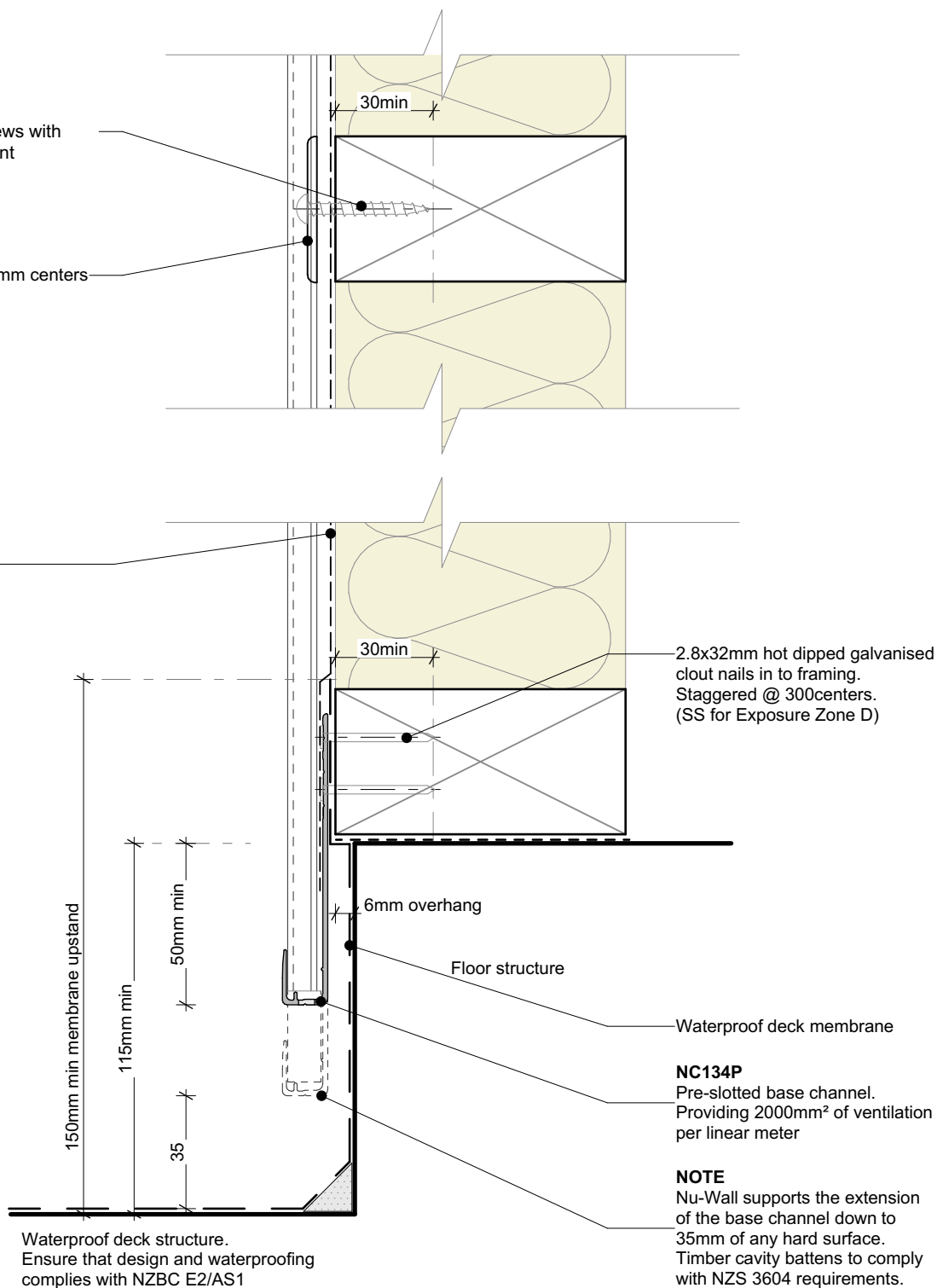


NC204
10g ss pan head screws with
30mm min embedment

NC203A
Fixing bracket @ 600mm centers

Wall underlay



Note:
• Standard fixing specification. May vary depending on wind load



nu-wall
CLADDING

Nu-Wall cladding vertical direct fix Typical base channel over waterproof deck

© 2021 copyright in this document is the property of Nu-Wall Aluminium Cladding Limited. All rights reserved. Nu-Wall is a registered trademark of Aluminium Product Brands NZ Limited

NW-VDF-004.02

Drawn by: Nu-Wall	Date: 02/07/2025
Checked by: RL, GT	Scale: 1:2 @ A4