

2.8x32mm hot dipped galvanised clout  
nails @ 600 centers.  
(SS for Exposure Zone D)

**NC203A**  
fixing clip @ 600 centers

Direction of installation

Last board ripped to fit

**NC 204**  
10g ss csk screws with 30mm min  
embedment through anti-crush packer  
(by others)

**NC 107X / NC 109X**  
Female/Male corner. Extends 50mm  
below bottom plate

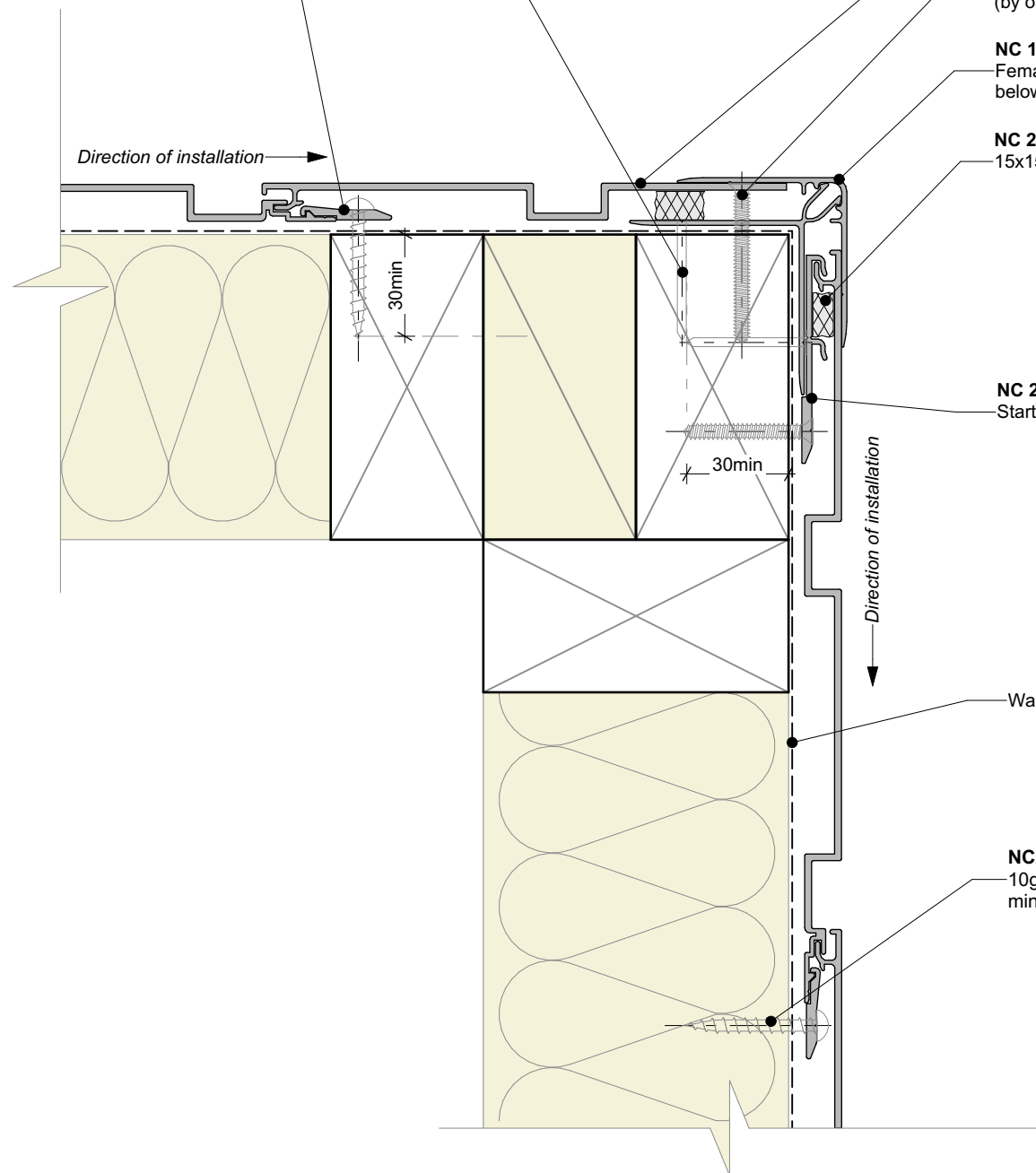
**NC 220**  
15x15mm closed-cell foam insert

**NC 232 F**  
Starter bracket

Direction of installation

Wall underlay

**NC204**  
10g ss pan head screws with 30mm  
min embedment



**nu-wall**  
CLADDING

## Nu-Wall cladding vertical direct fix Typical external 90 deg corner

© 2021 copyright in this document is the property of Nu-Wall Aluminium Cladding Limited. All rights reserved. Nu-Wall is a registered trademark of Aluminium Product Brands NZ Limited

NW-VDF-007.02

Drawn by: Nu-Wall

Date: 02/07/2025

Checked by: RL, GT

Scale: 1:2 @ A4